

2008 *United States Stamp Album*



Created for free use in the public domain
American Philatelic Society ©2009
www.stamps.org

2008 United States Postal Service Issues

Year of the Rat

January 9

In observance of the February 7 Chinese Lunar New Year holiday, the U.S. Postal Service introduced a new series of Lunar New Year stamps that will continue through 2019. Beginning with the Year of the Rat, stamps issued in consecutive years will include the Year of the Ox, Tiger, Rabbit, Dragon, Snake, Horse, Ram, Monkey, Rooster, Dog, and Boar.

Charles W. Chesnutt

January 31

The 31st stamp in the *Black Heritage Series* honors Charles W. Chesnutt, a novelist and short story-writer. Chesnutt (1858-1932) spoke out against segregation, revealing the contradictions at the heart of American attitudes toward race and history. He is recognized today as a major innovator and singular voice among turn-of-the-century literary realists who probed the color line in American life.

Marjorie Kinnan Rawlings

February 21

Marjorie Kinnan Rawlings (1896-1953) is remembered for her short stories, novels, and non-fiction works about life in the Florida backwoods. Her Pulitzer Prize-winning novel *The Yearling* and her memoir *Cross Creek* are her most publicized works. Her memoir spurred readers to urge her to write *Cross Creek Cookery*, a collection of recipes that remain popular in many kitchen libraries today.

American Scientists

March 6

Some of the most impressive scientific achievements of the 20th century are recognized on the American Scientists stamps.

Physicist John Bardeen (1908-1991) was the co-inventor of the transistor, arguably the most important invention of the twentieth century. He is also known for his works on superconductivity at low temperatures.

Biochemist Gerty Cori (1896-1957), along with her husband Carl, made important discoveries for understanding how cells use food and convert it to energy. Her work contributed to the understanding and treatment of diabetes and other metabolic diseases.

Astronomer Edwin Hubble (1889-1953) played a major role in deciphering the vast nature of the universe. His studies proved the existence of galaxies other than our own Milky Way, paving the way for a revolutionary new understanding that the cosmos contains a myriad of separate galaxies.

Structural chemist Linus Pauling (1901-1994) determined the nature of the chemical bond linking atoms into molecules. His pioneering work on protein structure led to many findings, including the classification of sickle cell anemia as a molecular disease.



2008 United States Postal Service Issues



Year of the Rat



John Bardeen
1908–1953



Charles W. Chesnutt
1858–1932



Gerty Cori
1896–1957



Edwin Hubble
1889–1953



Marjorie Kinnan Rawlings
1896–1953



Linus Pauling
1901–1994



2008 United States Postal Service Issues

Flags 24/7

April 18

In 1942, the U.S. Congress passed a resolution establishing a code of flag etiquette. It states that the American flag should be displayed from sunrise to sunset every day, weather permitting. It can also be flown through the night if properly lit.

The four new definitive flag stamp designs show our flag flying at different times of the day: sunrise, noon, sunset, and night. These stamps will continue to be issued as long as the first-class postage rate remains at 42 cents.

American Journalists

April 22

Five journalists who risked their lives reporting some of the most important events of the twentieth century have received their personal stamp of approval.

Martha Gellhorn (1908-1998) was one of the first women to become a war correspondent, covering the Spanish Civil War, World War II, and the Vietnam War. With her constant focus on the harm brought to civilians, her reporting was considered a morally courageous model for other journalists.

John Hersey (1913-1993) was noted for his historical fiction about catastrophic events during World War II. His most famous work, *Hiroshima*, describes what happened when the United States dropped an atomic bomb on the Japanese city that gave the work its title. It has been acclaimed as the greatest work of journalism of the twentieth century.

George Polk (1913-1948) was a talented young CBS radio correspondent reporting from Greece. He described the civil war between the right-wing government and communists that erupted there after World War II. He was working on reports of corruption involving U.S. aid when he disappeared. His body was found a week later. The exact circumstances of his death remain a mystery.

Ruben Salazar (1928-1970) was the first Mexican-American journalist to have a major voice in mainstream news media. He was a reporter and columnist for the *Los Angeles Times* and the news director for a Spanish language television station in Los Angeles. His reports included police brutality of Mexicans and the problems in eastside Los Angeles. While in Los Angeles covering a Vietnam War protest, Salazar was killed by a tear gas projectile. (Ruben Salazar image from the Los Angeles Times Photographic Archive Collection 1429), Department of Special Collections, Charles E. Young Research Library, UCLA.

Eric Sevareid (1912-1992) was a writer for the *New York Herald Tribune* and later a broadcast journalist for CBS radio. He covered World War II, reporting on the approach of the Germans to Paris, the civilian and military exodus from the city, and on life in London during wartime. In 1943, while en route to China, Sevareid parachuted from a disabled plane and emerged from the jungle on foot some time later. His later television commentaries in the 1960s and 1970s on the CBS Evening News were widely admired.



2008 United States Postal Service Issues

Flags 24/7



Sunrise



Noon



Sunset



Night



Martha Gellhorn
1908–1998



John Hersey
1913–1993



George Polk
1913–1948



Ruben Salazar
1928–1970



Eric Sevareid
1912–1992



2008 United States Postal Service Issues

Tropical Fruit

April 25

Five 27-cent definitive stamps picture tropical fruit that looks good enough to eat. Slices or halves of the five tropical fruits - pomegranate, kiwi, star fruit, papaya and guava - are sure to make your mouth water.

Guava may be round, oval, or pear-shaped, with pulp that has a soft, creamy texture. All of the more than 100 species of this fruit grows in the tropics or subtropics, some on trees and others on low shrubs.

The kiwi, also called kiwifruit, is an oval-shaped fruit with rows of small, black edible seeds among its bright green flesh. It is native to China, but is now grown in many countries, including the United States.

The Hawaiian papaya is a large pear-shaped fruit, often weighing up to one pound. The orange or pink colored flesh is sweet and juicy. The Mexican papaya has the same flavor as the Hawaiian variety, but is much larger and may weigh up to ten pounds.

The pomegranate is a round-shaped fruit, with a pulp that is a combination of sweet and tart. Although native to the area from Iran to the Himalayas in northern India, today the pomegranate is grown around much of the world, including the United States.

The star fruit, also known as a carambola, is a sweet tasting fruit, named for its shape. This tropical fruit, native to Malaysia, Sri Lanka, Indonesia, and southern China, is now grown in Hawaii and Florida.

Mount Saint Mary's University Stamped Card

April 26

The 200th anniversary of the founding of Mount St. Mary's University was celebrated with a stamped postal card featuring a watercolor painting of "the Terrace," one of the central attractions on the university's picturesque campus. The 27-cent postal card was not available to the public until after the postal rate hike on May 12.

Purple Heart

April 30

The Purple Heart is awarded in the name of the President of the United States to any member of an Armed Force or any civilian national of the United States who, while serving under competent authority in any capacity with one of the U.S. Armed Services, has been wounded or killed. A Purple Heart is authorized for the first wound suffered; subsequent injuries entitle the injured person to an Oak Leaf Cluster award.

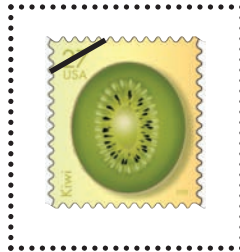
The Purple Heart stamp was previously issued with the same design and with a 41-cent denomination in 2007, with a 39-cent denomination in 2006, and with a 37-cent denomination in 2003.



2008 United States Postal Service Issues



Guava



Kiwi



Papaya



Pomegranate



Star Fruit



Purple Heart



Mount Saint Mary's University Stamped Card



2008 United States Postal Service Issues

Elk #10 Stamped Envelope

May 2

The elk, or wapiti, is one of the largest species of deer in the world. The 42-cent, elk-stamped envelope features a silhouette of a bull elk set against a shadowy background of evergreen trees.





Elk #10 Stamped Envelope



2008 United States Postal Service Issues

Forever (Liberty Bell)

May 12

The Liberty Bell is one of the most recognizable symbols of American independence. The Forever Stamp, first issued in 2007, features this international icon of freedom. As indicated by the name, the Forever Stamp will always be valid as First Class postage regardless of increases in postage rates.

Corinthian Capital Stamped Card

May 12

This stamped card features an ink-and-watercolor drawing of a Corinthian capital. The drawing - which was created in 1854 during the enlargement of the U.S. Capitol Building in Washington, DC - is from the records of The Architect of the Capitol.

James Michener and Edward Trudeau

May 12

A best-selling author, James Michener, and a noted physician, Edward Trudeau, received one of the nation's highest honors as new additions to the Postal Service's *Distinguished Americans* stamp series.

James Michener is best known as author of the book *Tales of the South Pacific*, the book that became the basis for the Rodgers and Hammerstein Oscar-winning musical *South Pacific*. In 1977 Michener was awarded the Presidential Medal of Freedom for his writings about the national interests of the United States. He later became a member of the Postal Service's Citizens' Stamp Advisory Committee (the panel that recommends new stamp issues to the Postmaster General).

Dr. Edward Trudeau is the 11th issue of the Distinguished Americans series. His achievements in the study of the lung disease, tuberculosis, led to the creation of a home for those suffering from the disease where they could live in the mountains with cold, clear mountain air to help cure them. Dr. Trudeau himself suffered from tuberculosis as a young man, and his brother and one of his sons both died from the deadly disease.



2008 United States Postal Service Issues



Mount Saint Mary's University Stamped Card



Forever (Liberty Bell)



James Michener
1907–1997



Dr. Edward Trudeau
1848–1915



2008 United States Postal Service Issues

Thirteen Mile Woods, New Hampshire and St. John, U.S. Virgin Islands

May 16

The *Scenic American Landscapes* series has added two stamps.

Thirteen Mile Woods is a pristine area, located in Errol, New Hampshire. The photograph on this international-rate stamp displays the sunrise on the Androscoggin River. The area is now protected from development, as it is dedicated to wildlife conservation, outdoor recreation, and sustainable logging.

The St. John, U.S. Virgin Islands stamp features Trunk Bay located in the Virgin Islands National Park. Located on the northern coast of St. John, this area is noted for its beautiful beaches, abundant plant life, and the coral reefs along its coast. The Trunk Bay stamp captures the natural wonder of the Park, allowing millions to enjoy the picturesque beauty of the U.S. Virgin Islands as this stamp carries letters and packages to destinations around the world.

Frank Sinatra

May 13

Frank Sinatra (1915-1998), aka "Ol' Blue Eyes," left his mark on America as an Oscar-winning actor with an amazing voice and romantic style of singing. In a fifty-year career studded with accolades, Sinatra won several Grammys, received the Jean Hersholt Humanitarian Award in 1971, and was recognized at the Kennedy Center Honors in 1983. President Reagan awarded him the Presidential Medal of Freedom in 1985. He is also remembered for his generous donations to many charities.

Minnesota Statehood

May 17

Minnesota became the 32nd state on May 11, 1858. This state is a land of water, with thousands of lakes and rivers lying within its borders. It is appropriate that this stamp shows a view of the MN-43/WI-54 bridge spanning the main channel of the Mississippi River near Winona in southeast Minnesota.

Dragonfly

May 19

The dragonfly is one of the world's oldest insects. Fossil records show that dragonfly species existed before dinosaurs and long before birds. It is characterized by its large eyes, an elongated body, and two pairs of strong transparent wings that are held perpendicular to the body when at rest.

Mt. Rushmore Priority Mail

June 6 (printed envelope release date May 12)

The Mount Rushmore National Memorial is located in the Black Hills of South Dakota near the town of Keystone. This monument, which is carved into Mt. Rushmore, consists of facial sculptures of four American presidents: George Washington, Thomas Jefferson, Abraham Lincoln, and Theodore Roosevelt.



2008 United States Postal Service Issues



Thirteen Mile Woods



St John, U.S. Virgin Islands



Frank Sinatra
1915–1998



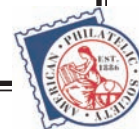
Minnesota Statehood



Dragonfly



Mt. Rushmore Priority Mail



2008 United States Postal Service Issues

Wedding Hearts (42¢ and 59¢)

June 10

In 2008 the U.S. Postal Service reissued the designs of the two 2007 Wedding Hearts featuring vines that form the shape of a heart. The stamps were designed especially for mailing wedding invitations and RSVPs, adding an elegant touch to invitations and response cards. The one-ounce (42-cent) denomination features a light green background, while the two-ounce (59-cent) denomination features a pale peach background.

Love: All Heart

June 10

The series of Love stamps continued in 2008 with the All Heart stamp. The stamp shows a large, bright red oversized heart that is being transported by its owner to an unseen beloved who will be gifted with this heart full of love. The whimsical stamp is a runaway hit when attached to thank you cards, Valentine's Day cards, and any correspondence intended to carry playful displays of affection.

Flags of Our Nation I

June 14

As the nation celebrated Flag Day, the U.S. Postal Service launched a three-year multi-stamp series honoring the states and territories of the United States. In addition to the Stars and Stripes, flags of Alabama, Alaska, Arkansas, American Samoa, Arizona, California, Colorado, Connecticut, and Delaware were featured in this first portion of the new series.

David Failor, Executive Director of the US Postal Service Stamp Services, explains: "Flags are our nation's greatest symbols for unity and pride and the values we hold dear. The Postal Service is proud to present this tribute as we honor our nation's flags."



2008 United States Postal Service Issues



Wedding Hearts

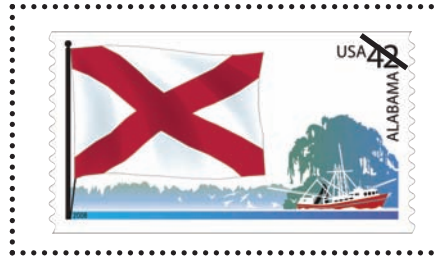


Love: All Heart

Flags of Our Nation I



United States of America



Alabama



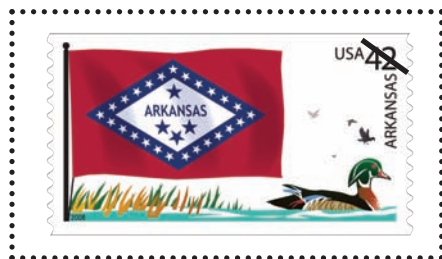
Arizona



American Samoa



Arizona



Arkansas



California



Colorado



Connecticut



Delaware



2008 United States Postal Service Issues

Charles and Ray Eames

June 17

Honoring the husband-and-wife design team of Charles and Ray Eames, this commemorative sheet of 16 stamps represents the breadth of their extraordinary creative work, which includes architecture, furniture, film, and exhibits. If you've ever sat in a stackable molded chair, you've experienced their creativity.

*Eames furniture designs and the associated Eames trademark are the property of Herman Miller, Inc.



2008 United States Postal Service Issues



Charles (1907–1978) and Ray (1912–1988) Eames



Case Study House #8



Crosspatch Fabric Design



Lounge Chair and Ottoman



Magazine Cover



Molded Plywood Chair



Eames Storage Unit



Stacking Chairs



Molded Plywood Sculpture



Wire Mesh Chair



Wire-Base Table



The Film *Tops*



2008 United States Postal Service Issues

Beijing Olympics

June 19

The Postal Service continued its tradition of honoring the spirit of athleticism and international unity inspired by the Olympic Games when this gymnast jumped into the post office. The stamp was issued to coincide with the games of the XXIX Olympiad, which were held August 8-24 in Beijing, China.

Hoover Dam Express Mail

June 20

Named after President Herbert Hoover, the Hoover Dam is a national historic landmark located on the Colorado River on the Arizona-Nevada border. When completed in 1935, it was both the world's largest electric-power generating station and the world's largest concrete structure.

Celebrate

July 10

The Celebrate! stamp helps Americans celebrate everything from birthdays to engagements, to anniversaries and more. When good times call for good wishes, this stamp adds a touch of cheer to special greeting cards and gift packages.

The stamp design consists of 12 colorful blocks arranged in 4 horizontal rows, with 3 blocks in each row. Each block in the top 3 horizontal rows contains a single letter of the alphabet, and together the blocks spell out the word Celebrate. The 3 blocks in the bottom row contain an exclamation point, a star and the denomination.

The stamp was previously issued in a 41-cent denomination in 2007.

Vintage Black Cinema

July 16

Vintage movie posters reflect the African-American cultural experience as it was represented in early films. These posters have become invaluable pieces of history, preserving memories that might have otherwise been forgotten.

The stamp images depict movie posters that promoted:

The 1921 silent film *The Sport of the Gods*.

The first screen appearance of Duke Ellington in the 1929 film *Black and Tan*.

Princess Tam-Tam, a 1935 French film that was one of four movies to star Josephine Baker.

Hallelujah (1929), one of the first major-studio films to feature an all-black cast.

The 1945 short *Caldonia*, which highlighted the talents of singer, saxophonist, and "jump blues" bandleader Louis Jordan. *Caldonia* is often cited as a precursor to today's music videos.



2008 United States Postal Service Issues



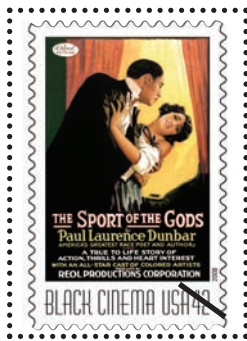
Beijing Olympics



Hoover Dam
Express Mail



Celebrate!



Vintage Black Cinema
The Sport of the Gods



Vintage Black Cinema
Black and Tan



Vintage Black Cinema
Princess Tam-Tam



Vintage Black Cinema
Hallelujah



Vintage Black Cinema
Caldonia



2008 United States Postal Service Issues

Take Me Out to the Ball Game

July 16

"Take Me Out to the Ball Game's" catchy chorus has been part of the musical tradition at ballparks around the country for 100 years. The tune was written by actor, singer, and songwriter Jack Norworth (1879-1959) when he saw a sign about an upcoming ball game.

The Art of Disney: Imagination

August 7

Imagination was at the heart of all Walt Disney's creations. How appropriate that the fifth and final issue in the Art of Disney series commemorates "imagination."

Walt Disney said that Mickey Mouse was "created for the purposes of laughter." This stamp portrays Mickey, with his familiar smile, playing the part of *Steamboat Willie* from the cartoon of the same name that was released in 1928.

Princess Aurora, also known as *Sleeping Beauty*, always imagined that she would find true love. This stamp features the good fairies - Flora, Fauna, and Merryweather - along with Princess Aurora, from this fairy tale classic, which became a Disney animated film in 1959.

101 Dalmatians, released in 1961, was the seventeenth animated feature produced by Walt Disney. Based on the novel *The Hundred and One Dalmatians* by Dodie Smith, the film allows the viewer to imagine a dog's emotional life after the puppies of Pongo and Perdita have been kidnapped. This stamp portrays Pongo and one of his pups.

The Jungle Book was the last animated feature produced by Walt Disney. Imagine Mowgli - a young boy who has been raised in the jungle by a wolf - as he befriends the other animals around him. Pictured on the stamp are Mowgli and his bubbly bear buddy Baloo.

Albert Bierstadt

August 14

The 8th issuance in the *American Treasures* series features the *Valley of the Yosemite*, an 1864 painting by Albert Bierstadt (1830-1902). The painting shares the freshness and immediacy of the plein air field sketches Bierstadt used in composing a much larger painting titled *Looking Down Yosemite Valley*. The original *Valley of the Yosemite* painting belongs to the Museum of Fine Arts, Boston, Massachusetts.

Sunflower

August 15

The sunflower was possibly named because at sunrise the faces of most sunflowers are turned towards the east. Over the course of the day, they follow the sun from east to west, while at night they return to an eastward orientation. This definitive stamp features a close-up of a sunflower, with its radiant beauty that has long inspired photographers, painters, and poets, as well as gardeners, floral arrangers, and countless other admirers.



2008 United States Postal Service Issues



Take Me Out
To The Ball Game



The Art of Disney:
Imagination - Mickey Mouse



The Art of Disney:
Imagination - Princess Aurora



The Art of Disney:
Imagination - 101 Dalmations



The Art of Disney:
Imagination - The Jungle Book



Albert Bierstadt



Sunflower



2008 United States Postal Service Issues

Flags of Our Nation II

September 2

The U.S. Postal Service continued its proud tradition of honoring state and territorial flags with the second set of the *Flags of Our Nation* stamp series. Anchored by our nation's capital flag representing the District of Columbia, the state and territorial flag series includes Florida, Georgia, Guam, Hawaii, Idaho, Illinois, Indiana, Iowa, and Kansas.

In addition to the main First Day of Issue ceremony, stamp events were held concurrently at state capitols from Florida and Kansas. The same process will be repeated in 2009 and 2010 for a total of 60 stamp designs.

Latin Jazz

September 8

Latin jazz, with its complex rhythm section of conga drums, the bongo, maracas, cowbells, and other percussion instruments, can be heard at your local post office. Built on a combination of Caribbean and North American music styles, Latin jazz spread throughout the U.S., becoming very popular in the 1940s and 1950s. Since then, new instruments such as the flute and trumpet have been added to the Latin jazz sound. The 2008 stamp issue Latin Jazz captures the upbeat, energetic and romantic spirit that characterizes the musical genre. It conveys the multicultural aspects of the music, its percussive and improvisational nature, and, of course, its rhythmic complexity.

Bette Davis

September 18

The *Legends of Hollywood* continues with the Bette Davis (1908-1989) becoming the fourteenth inductee. A consummate actress with a magnetic screen presence, Ms. Davis played a wide variety of powerful and complex roles during her six-decade career. She became well known for her extravagant mannerisms and zingy one-liners. She received ten Academy Award nominations for best actress; she won twice for her starring roles in *Dangerous* (1935) and *Jezebel* (1938).

Eid

September 23

The fifth and final version of the Eid stamp was released in 2008. Eid al-Fitr (often called Eid) is the Muslim holiday that marks the end of Ramadan, the Islamic holy month of fasting, charitable giving, and peace-making. Eid falls on the first day of Shawwal, the month that follows Ramadan in the Islamic calendar. In 2008, Eid started on October 1 in North America.



2008 United States Postal Service Issues



District of Columbia



Florida



Georgia



Guam



Hawaii



Idaho



Illinois



Indiana



Iowa



Kansas



Latin Jazz



Bette Davis



Eid



2008 United States Postal Service Issues

Nature of America: Great Lakes Dunes

October 2

One of the largest freshwater dune systems on earth is now featured on U.S. postage stamps. The tenth stamp in the Postal Service's *Nature of America* series features the beauty and complexity of major plant and animal communities, where plants and animals interact with wind, water, and sand in the Great Lakes Dunes. To illustrate the diversity of species associated with Great Lakes dunes, the artist used his imagination to depict a dense grouping of more than twenty-seven different kinds of plants and animals.

Coastal dune plant communities begin to form when hardy pioneer vegetation, such as marram grass, traps and holds sand particles carried ashore by wind and water. In time, more plants take root, and they in turn support a wide variety of insects, mammals, and other wildlife. Numerous birds, including endangered piping plovers, have found a summer haven at Sleeping Bear Dunes National Lakeshore, the area featured on the stamp pane, which was named for a huge dune formation that vaguely resembles a sleeping bear.



2008 United States Postal Service Issues

GREAT LAKES DUNES

TENTH IN A SERIES



N A T U R E E R I C A



2008 United States Postal Service Issues

America on the Move: 50s Fins & Chrome

October 3

America's love affair with fast and flashy automobiles took center stage on U.S. postage stamps in 2008. These America on the Move stamps showcased a 1957 Chrysler 300C, a 1957 Lincoln Premiere, a 1957 Pontiac Safari, a 1957 Studebaker Golden Hawk, and a 1959 Cadillac Eldorado.

The 1957 Chrysler 300C, with its lasting impressionable tailfins, was nicknamed the "beautiful brute" by automotive enthusiasts. With its "Forward Look," the 300C had a powerful Hemi V-8 motor, available in 375 and 390 horsepower designs. Most came with a three-speed transmission and a complete push-button dash layout.

The 1957 Lincoln Premiere, with its prominent fins and quad headlights, came with a 300 horsepower, V-8 engine that was able to do 0-60 in 12 seconds and had a top speed of 110 miles per hour. The car had electric windows, and power steering, brakes, and seats - all mostly unheard of in 1957.

1957 Pontiac Safari was a two-door sport-coupe wagon, with lots of chrome adorning the tailgate and the interior to add to the sport-like image of this wide-wheel based vehicle. For General Motors, the Safari was to be the fanciest and sportiest of all station wagons ever manufactured.

The 1957 Studebaker Golden Hawk was the top of the line of the Hawk models. The design was a hit with its bold grille and expanded Speedster-style instrument panel. It was targeted for those who wanted the performance of a sports car, with comfortable seating for four or five, making it a breathtaking family car.

1959 Cadillac Eldorado had the tallest (45-inch) tailfins ever produced on a car. This prestigious car was the center of attention wherever it went. It came loaded with standard equipment not yet available on most cars of the 1950s. Included were power vent windows, an antenna, and air suspension for a comfortable ride. It also came with the option of having front bucket seats.

Alzheimer's

October 17

The Alzheimer's Awareness commemorative stamp continues the Postal Service tradition of raising public awareness of health and social issues through its stamp program. Recent stamps have highlighted important issues such as literacy, hospice care, breast cancer awareness, AIDS awareness, organ and tissue donation, and philanthropy; and, in the case of the Breast Cancer Research stamp, helped raise funds for research.

Americans are asked to use the power of mail to raise awareness to this most common form of dementia among older people. The postal service hopes to draw attention to the causes of the disease, the impact it has on individuals, caregivers and society, and how research may eventually lead to treatments that prevent or halt the progression of the disease.



2008 United States Postal Service Issues



1957 Chrysler 300C



1957 Lincoln Premier



1957 Pontiac Safari



1957 Studebaker Golden Hawk



1959 Cadillac Eldorado



Alzheimer's



2008 United States Postal Service Issues

Holiday Nutcrackers

October 23

Nutcrackers have been around for centuries. You can see them in stores, on the mantel, pictured in books and magazines, and even in dance performances. During the 2008 holiday season they could be seen traveling across the country on mail.

The four eye-catching designs - Santa (or "Father Christmas"), a king, a captain, and a drummer - added colorful, humorous touch to winter holiday cards, letters, and packages.

Traditional Christmas: Virgin and Child with the Young John the Baptist

October 23

Since 1978, worldwide representations of the Madonna and Child have been seen in the post office during the holiday season. In 2008 John the Baptist joined them on the Christmas stamp.

Taken from a painting by Sandro Botticelli dated to around 1490 and titled Virgin and Child with the Young John the Baptist, the stamp continues the tradition of depicting the tender relationship between mother and child. The original painting is part of the collection of the Cleveland Museum of Art.

Kwanzaa

October 24

Kwanzaa - the celebration of family, community, and culture - is part of the postal service's Holiday Celebrations series. This stamp commemorates the modern African-American holiday that celebrates the seven principles of unity, self-determination, collective work and responsibility, cooperative economics, purpose, creativity, and faith.

This stamp design was previously issued with a 37-cent denomination in 2004, a 39-cent denomination in 2006, and a 41-cent denomination in 2007.

Hanukkah

October 24

Hanukkah, the Jewish Festival of Lights, is now being celebrated on a 42-cent stamp. As part of the Holiday Celebrations series, this stamp features a photograph of a dreidel used in playing a holiday children's game and the word "Hanukkah." This stamp was previously issued with 37-cent, 39-cent, and 41-cent denominations.



2008 United States Postal Service Issues



**Holiday Nutcrackers
Captain**



**Holiday Nutcrackers
Drummer**



**Holiday Nutcrackers
King**



**Holiday Nutcrackers
Father Christmas**



**Traditional Christmas:
Virgin and Child with the
Young John the Baptist**



Kwanzaa



Hanukkah



The American Philatelic Society

Membership in the APS supports the hobby and brings you the services you need including:

The American Philatelist - The world's premier stamp magazine written by our members for our members.

APEX Expertizing Service - Offers guaranteed opinions on the genuineness of all stamps by our committee of experts.



American Philatelic Research Library - Book loans, copy service, reference assistance, and new online catalogue.

APS Stamp Insurance Plan - The best and most comprehensive coverage available -- low cost for members and quality service, too.

Education Programs - Summer Seminar, Youth Programs, Internet and Correspondence Courses -- learning never ends, sign up today!

Quick I.D. - Helps identify that troubling stamp at a sub-

stantially lower cost than through the formal certification process.

Sales Division Circuits - Our most popular service -- \$9,000,000 inventory awaits your requests -- mini-stamp stores delivered to your front door!

StampStore - Buy/Sell online via our members only Internet sales site, more than 270,000 items. New items added every business day!

Receive mailings keyed to your particular interest areas - register up to six collecting interests.

Get in touch with other collectors - through APS directories of local stamp clubs, dealers in your area, and specialty societies geared to your collecting interests. The directories are available on our website or in print from headquarters.

Take advantage of fellow members expertise - use the Translation Service and the Committee for the Care and Preservation of Philatelic Material.

General Information - Have a question or need assistance utilizing any of our many other services? offered by the American Philatelic Society, please contact:

American Philatelic Society
100 Match Factory Place
Bellefonte, PA 16823
Phone 814-933-3803
Fax 814-933-6128
www.stamps.org

